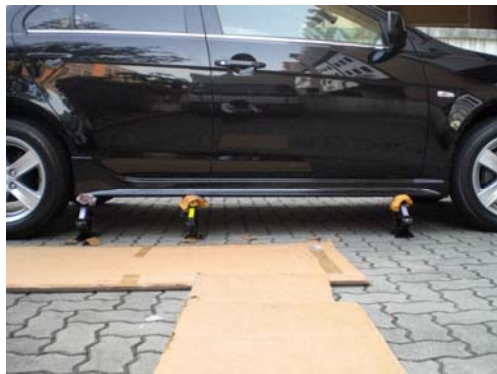
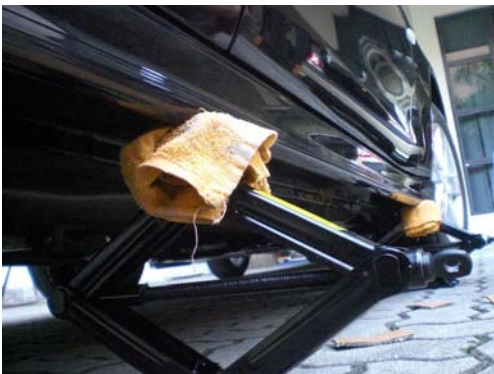




The Square fastener are used for fastening side extension under chassis



The Round fastener are used for fastening side extension's side chassis



Part 1 – Check Alignment and marking for drilling.

Picture 1: Remove the plastic cover below the side chassis.

Picture 2: Fit the Square fastener at the side extension.

Picture 3: At both end of the side extension add 2 nuts as a spacer at the last fastener.

Picture 4: Place the side extension to the chassis to check alignment.

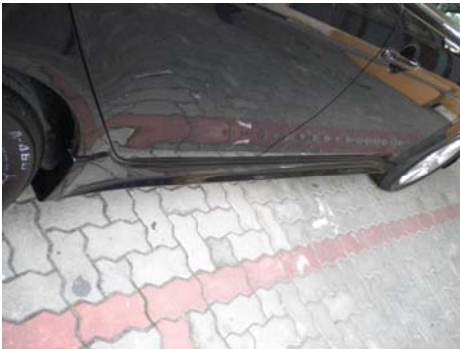
Picture 5: Use 3 car jacks to hold the side extension. Center jack should place toward the rear.



7



8



9

Picture 7 & 8: Make sure that the front & rear side extension lining are align with the chassis

Picture 9: Make sure no gap is in between the side extension and chassis.

Picture 10: You need a crayon.

Picture 11: Using the crayon to draw a line at the chassis.

Picture 12: Make sure there are no gaps in between, than remove the side extension



10



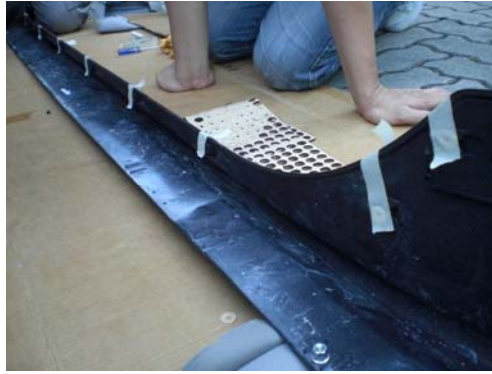
11



12



13



14

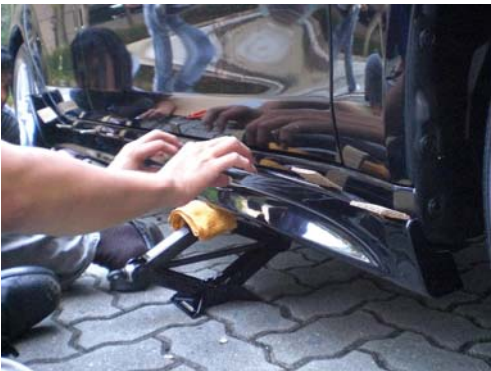


15

Picture 13: Prepare the side extension ready with all marker maker on the fastener holder using of double marker maker are advised.

Picture 14: Use masking tape to stick over the marker maker

Picture 15: Make sure all the masking tape can stick to release the tape from the marker maker.



16



17



18

Picture 16: Place the side extension to the chassis with the car jack

Picture 17: Between the side extension and chassis please place cardboard.

Picture 18: Slowly adjust the car jack and shift the side extension to the line marking.

Picture 19: The purpose of placing the cardboard in between the side extension are to form a gap after the side extension has adjust in place.



19



20



21



22



23

Picture 20: Shift the cardboard side by side to the masking type to enlarge the gap

Picture 21: Slowly and very careful to pull the masking type off from the marker maker

Picture 22/23: The masking has stick the sticker off from the marker maker.



24



25



26

Picture 24/25/26: Made sure you firmly depressed the side extension in contact with the chassis and allow the marker maker to stick onto the chassis. After you are sure that the marker had stick onto the chassis remove the side extension from chassis.

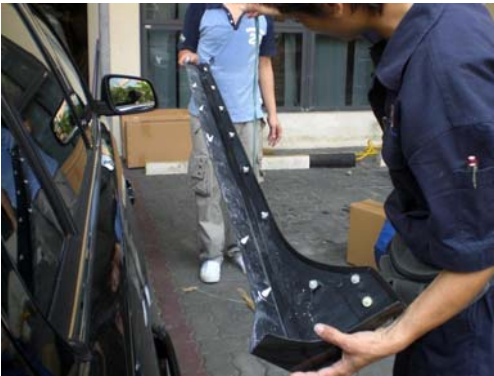


Part 2 Installing and drilling

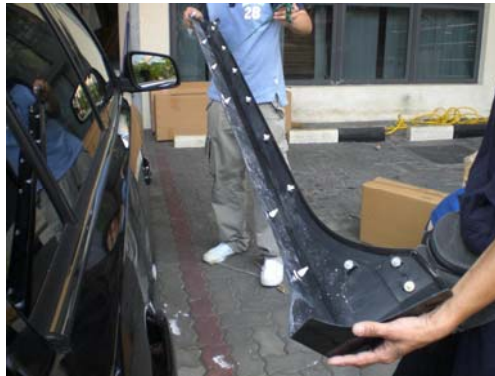
Picture 27/28: Marker maker has successful stick onto the chassis



Picture 29/30/31: Use a 3mm drill bits to drill pilot holes at the middle of the marker, than enlarge the pilot holes by using 7.5mm drill bits. Then apply silicon to the holes as picture shown.



32



33



34



35

Picture 32/33: Remove the double side taped from the side extension.

Picture 34: Place the side extension to the chassis and fasten it from below chassis.

Picture 35: After fasten, push up the side extension adjust the all side clipping fastener to align it to the holes

than fasten clipping into chassis.



Picture 36: you have completed the installation.